

Data Sheet

U-BRS-STOP Tile edging

DESCRIPTION

The U-BRS-STOP is an accessory for fixed joists which holds the tile to its edge when the end of the joist have a 90° angle.

COMPOSITION

U-BRS-STOP is made up of one piece.

CHARACTERISTICS

Weight : 0,005 kg

Thickness : 2 mm

Dimensions : 42,7 x 30 x 19,2 mm

MATERIAL

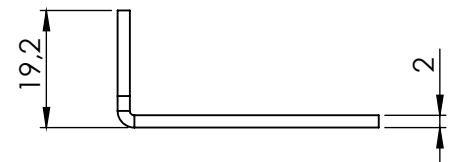
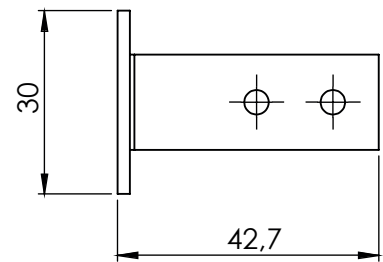
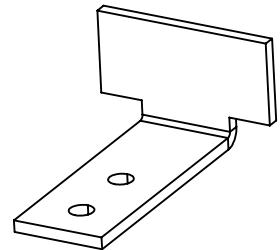
Stainless steel 316 (V4A)

PACKAGING

Qty per box : 1000 pcs

Box weight : 5,1 kg

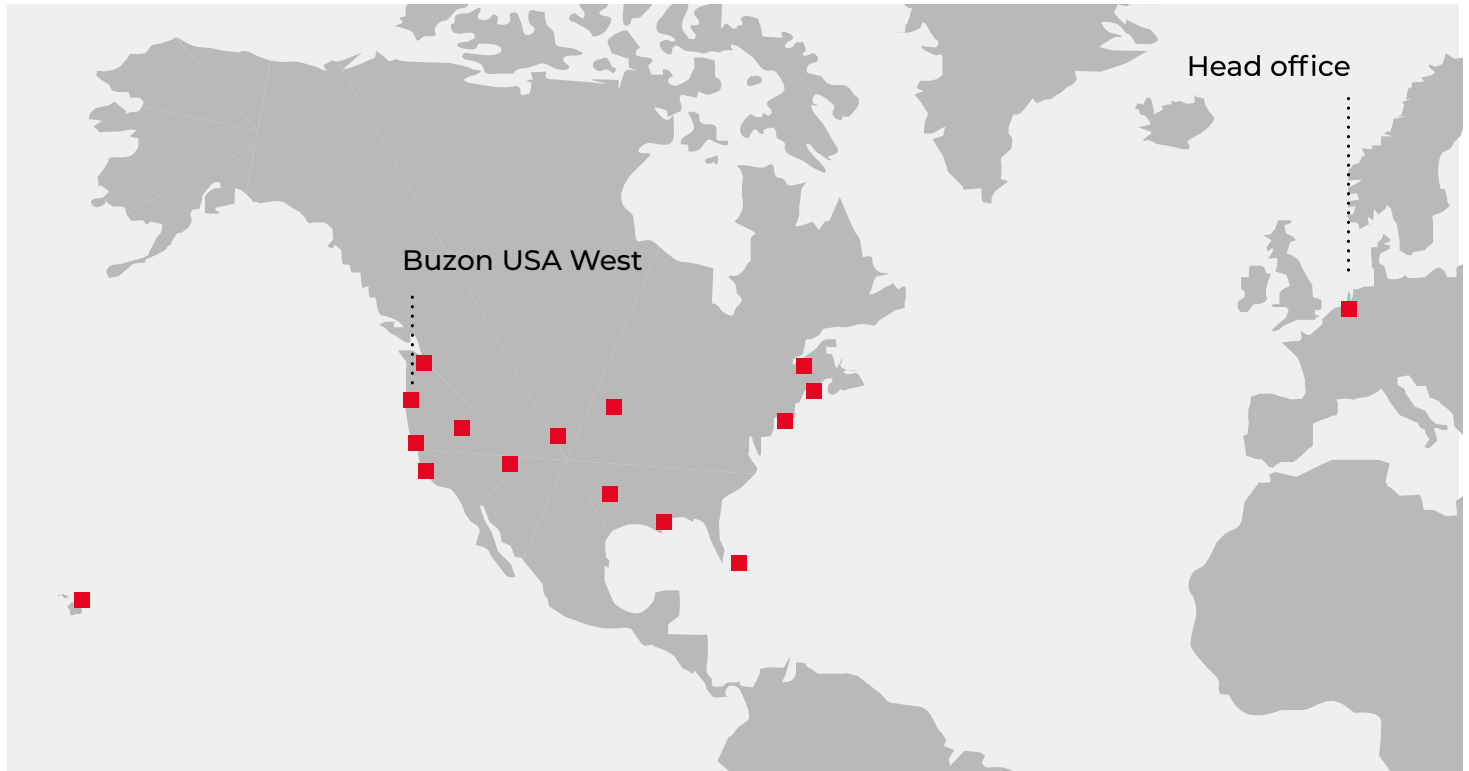
Box dimensions : 335 x 310 x 225 mm



SAFETY INSTRUCTIONS

Buzon pedestals and accessories are designed to support raised floors for pedestrians only. They cannot support or be subjected to moving or vibrating machines and equipment. This includes cars, maintenance vehicles and other similar equipment.

Buzon USA West Projects



References

- Sun's Practice Facility - Phoenix, AZ
- Sony Studio HQ - Los Angeles, CA
- Apple Campus - Palo Alto, CA
- Samsung HQ - Palo Alto, CA
- Lucille Packard Children's Hospital - Stanford, CA
- Haas School of Business - UC Berkeley, CA
- IMAX Theater - Nassau, Bahamas
- Four Seasons Hotel - Honolulu, HI
- Canal Street Rooftop Pool - New Orleans, LA

- Smith Center Harvard University - Cambridge, MA
- Microsoft Campus - Redmond, WA
- The Dean - Palo Alto, CA
- Nike Campus HQ - Beaverton, OR
- Hoakalei CC - Ewa Beach, HI
- Hilton Grand Islander - Honolulu, HI
- Four Seasons Resort at Ko Olina - Kapolei, HI
- One World Trade Center - New York City, NY
- Wynn Resort & Casino Hotel - Las Vegas, NV

