



Data Sheet

E-BRS-WALL

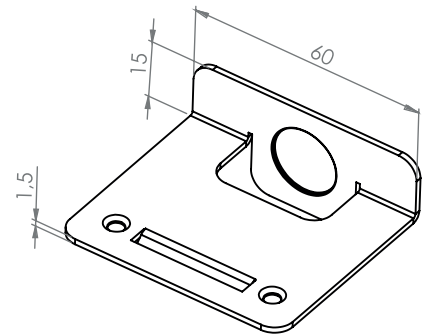
Wall spacer for E-BRS

DESCRIPTION

E-BRS-WALL :

- Used to stabilise the last row of tiles (along the wall) when the joist is positioned parallel to the wall.
- Creates a 5 mm gap between the tile and the wall to ensure natural water drainage.
- Compatible with aluminium joists **E-BRS-27/27-B** and **E-BRS-41/41-B**.
- Compatible with aluminium joists **U-BRS-24/24-B** and **U-BRS-38/38-B**, but only with 3mm-thick EPDM(**E-BRS-EPDM**).

U-BRS-VIS screws must be ordered separately.



CHARACTERISTICS

Material : **Inox AISI 316**

Thickness : **1,5 mm**

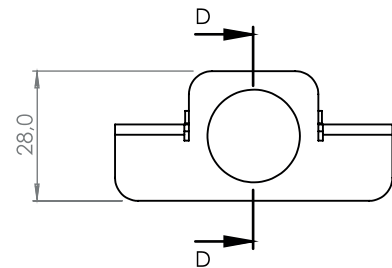
Corrosion resistance : **Excellent**

PACKAGING

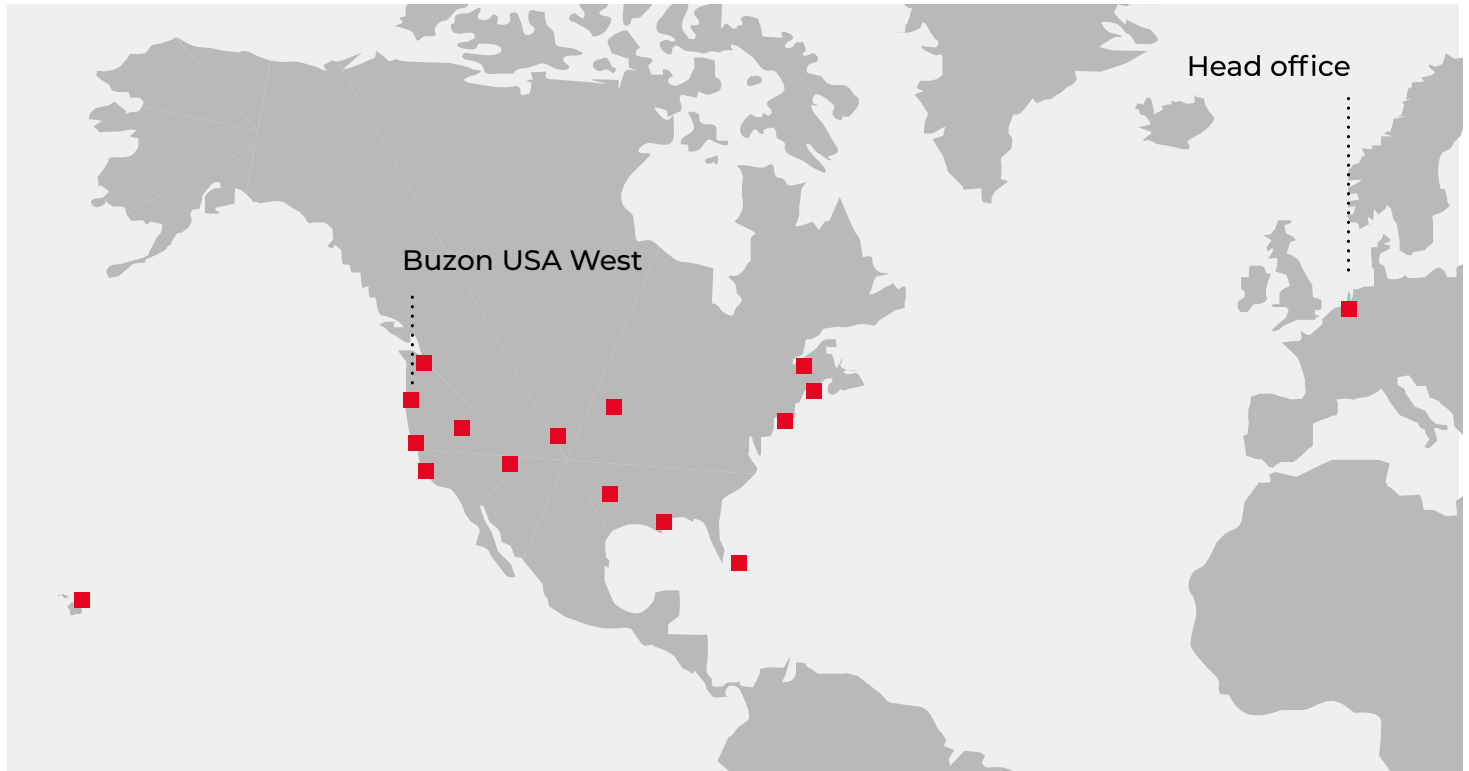
Per unit

APPLICATIONS

Buzon pedestals and accessories are designed to support raised floors used only by pedestrians. They cannot support or be subjected to moving or vibrating machinery and equipment. This includes cars, maintenance vehicles and similar equipment.



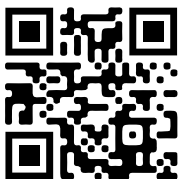
Buzon USA West Projects



References

- Sun's Practice Facility - Phoenix, AZ
- Sony Studio HQ - Los Angeles, CA
- Apple Campus - Palo Alto, CA
- Samsung HQ - Palo Alto, CA
- Lucille Packard Children's Hospital - Stanford, CA
- Haas School of Business - UC Berkeley, CA
- IMAX Theater - Nassau, Bahamas
- Four Seasons Hotel - Honolulu, HI
- Canal Street Rooftop Pool - New Orleans, LA

- Smith Center Harvard University - Cambridge, MA
- Microsoft Campus - Redmond, WA
- The Dean - Palo Alto, CA
- Nike Campus HQ - Beaverton, OR
- Hoakalei CC - Ewa Beach, HI
- Hilton Grand Islander - Honolulu, HI
- Four Seasons Resort at Ko Olina - Kapolei, HI
- One World Trade Center - New York City, NY
- Wynn Resort & Casino Hotel - Las Vegas, NV



Buzon®

Buzon USA West

sales@buzonusawest.com

buzonpedestals.com

(503) 954 - 3336

