

MADE IN BELGIUM



www.buzonpedestals.com



CATALOGUE

E-BRS system

“

BREATHE LIFE INTO YOUR TERRACE



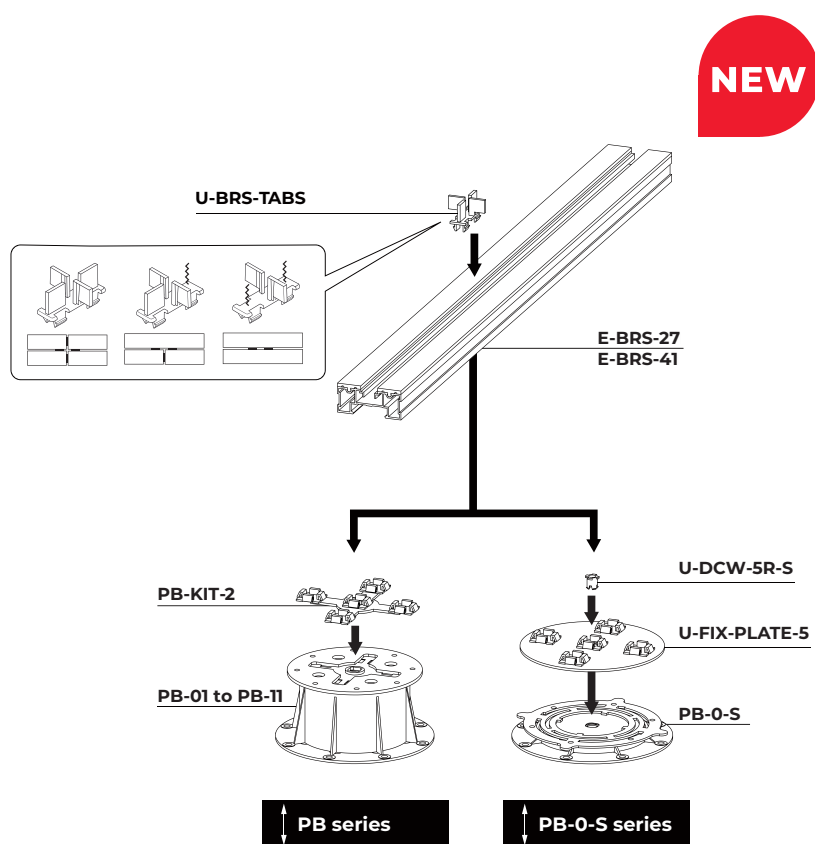
Our new joists BUZON E-BRS®

Our new **E-BRS** aluminium joists have been designed and developed to meet today's standards and requirements.

The E-BRS offers a complete structure for creating raised outdoor areas with ceramic, natural stone, concrete or even wooden pavers. The time saved and the increased stability of our joist will delight professionals and private customers.

They are now delivered with a **hole** to allow easier water run-off. They also come with a **marking** system to indicate the position of the joist on the pedestal and are delivered as standard with the rubber **EPDM joint**.

The **E-BRS** are available in two colours; aluminium or black; and in two thicknesses: **1"** or **1 5/8"**, for a total length of **92 1/2"**.



SUMMARY /

06 /

Basic accessories

14 /

Additional accessories

18 /

Finishing accessories





**FACTORY-FITTED
EPDM RUBBER**



FASTER LAYING



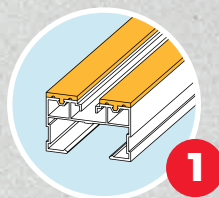
LONG-TERM STABILITY



**FLEXIBILITY/ADAPTABILITY
TO SITE FEATURES**



**IDEAL SOLUTION FOR LARGE
FORMAT PAVERS**



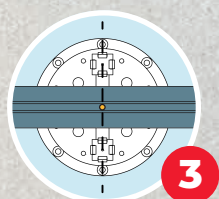
SHIMS

The joists are now delivered with rubber **EPDM** joints.



WATER EVACUATION SYSTEMS

Holes have been punched in the rail, allowing better **drainage**.



POSITION MARKERS

A **guide** denotes the position of the joist on each Buzon® pedestal, making measuring a thing of the past.

2



1



1



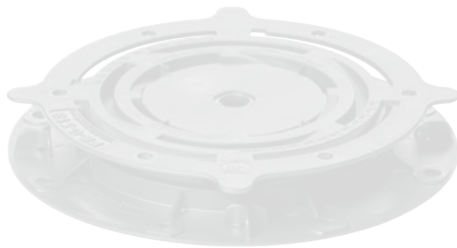
3



4



2



PB-0-S PEDESTAL



PB PEDESTAL



1

	ARTICLE	H + (MM)	DESCRIPTION	NOTE	N°	PCS/BOX
1	E-BRS-41	1 5/8"	Aluminium joist 2 3/8" x 1 5/8" (natural)	92 1/2" x 2 3/8" x 1 5/8"	21 3287	132
	E-BRS-41-B	1 5/8"	Aluminium joist 2 3/8" x 1 5/8" (black anodised)	92 1/2" x 2 3/8" x 1 5/8"	21 3288	132
	E-BRS-27	1"	Aluminium joist 2 3/8" x 1" (natural)	92 1/2" x 2 3/8" x 1"	31 3286	216
	E-BRS-27-B	1"	Aluminium joist 2 3/8" x 1" (black anodised)	92 1/2" x 2 3/8" x 1"	21 3285	216
2	PB-KIT-2	-	E-BRS fixing attachment on PB pedestal	For PB pedestals	23 2664	120
3	U-DCW-5R-S	-	Mounting interface - Small	For PB-0-S pedestals only	13 2697	6000
4	U-FIXING-PLATE-5	1/8"	Universal 5-point fixing	For PB-0-S pedestals only	13 2381	120

Joists in aluminium

SCAN AND DOWNLOAD

Scan the QR code
and download our comprehensive
documentation.

The **E-BRS** system offers a complete structure for creating raised outdoor areas with ceramic, natural stone or concrete pavers. The system consists of adjustable **PB** pedestals, reinforced aluminium joists, spacer tabs to ensure constant spacing between the pavers and a full range of accessories.

Available in 2 thicknesses and 2 models:

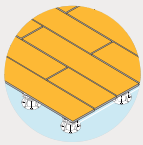
1"

1 5/8"

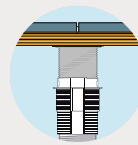
NATURAL

ANODISED

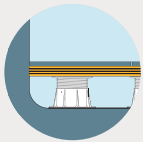
ADVANTAGES AND USES



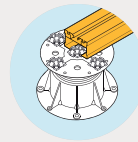
The **E-BRS** joists are ideal for laying large-format pavers (e.g. 47 1/4" x 47 1/4") or elongated pavers (e.g. 11 7/8" x 47 1/4").



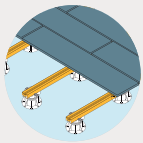
Joists ensure greater rigidity in the case of higher structures.



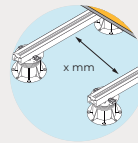
The joists allow for an overhang, which makes it much easier to finish and saves a lot of time during installation.



Powder-coated joists prevent reflections and are more resistant to corrosion (chlorine, fresh concrete, seawater or salt).



The perfectly straight joists make levelling easy and save a lot of time during installation.



1" joists require a spacing of 1 5/8" between pedestals, while 1 5/8" joists require a spacing of 31 1/2" between pedestals.



**PB-0-S PEDESTAL****PB PEDESTAL**

	ARTICLE	H + (MM)	DESCRIPTION	NOTE	N°	PCS/BOX
1	E-BRS-41	1 5/8"	Aluminium joist 2 3/8" x 1 5/8" (natural)	92 1/2" x 2 3/8" x 1 5/8"	21 3287	132
	E-BRS-41-B	1 5/8"	Aluminium joist 2 3/8" x 1 5/8" (black anodised)	92 1/2" x 2 3/8" x 1 5/8"	21 3288	132
	E-BRS-27	1"	Aluminium joist 2 3/8" x 1" (natural)	92 1/2" x 2 3/8" x 1"	31 3286	216
	E-BRS-27-B	1"	Aluminium joist 2 3/8" x 1" (black anodised)	92 1/2" x 2 3/8" x 1"	21 3285	216
2	PB-KIT-2	-	U-BRS fixing attachment on PB pedestal	For PB pedestals	23 2664	120
3	U-DCW-5R-S	-	Mounting interface - Small	For PB-0-S pedestals only	13 2697	6000
4	U-FIXING-PLATE-5	1/8"	Universal 5-point fixing	For PB-0-S pedestals only	13 2381	120

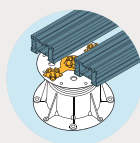
Fixing attachment on PB pedestal

The fixing attachment (**PB-KIT-2**) is used to fix the joist onto the **PB pedestals**.

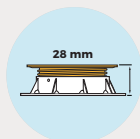
ADVANTAGES AND USES



Clips onto the pedestal without the need for tools.



The 5 fixing points offer the possibility of connecting several joists on the same pedestal and make it easy to secure the joists.



Only compatible with the **PB pedestals** from 1 1/8" (**PB-01** to **PB-11**).

SCAN AND DOWNLOAD

Scan the QR code and download our comprehensive documentation.



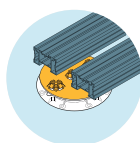
Fixing attachment on PB-0-S pedestal

The 5-point universal fixing attachment (**U-FIXING-PLATE-5**) makes it possible to fix the joist to the **PB-0-S** pedestals.

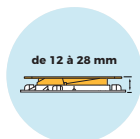
ADVANTAGES AND USES



Clips onto the pedestal, without the need for tools, using the mounting interface accessory (**U-DCW-5R-S**).



The 5 fixing points offer the possibility of connecting several joists on the same pedestal and make it easy to secure the joists.

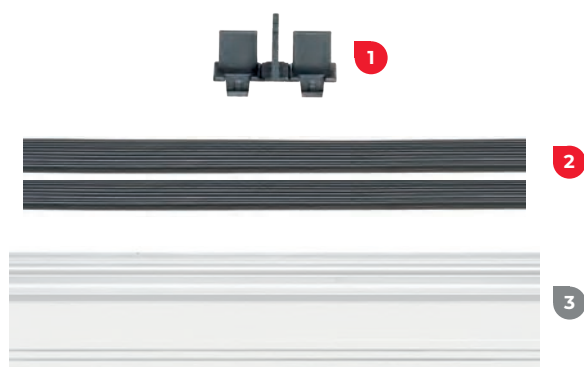


Only compatible with the **PB-0-S** pedestals, from 7/16" to 1 1/8" (**PB-0-S12** and **PB-0-S18**).

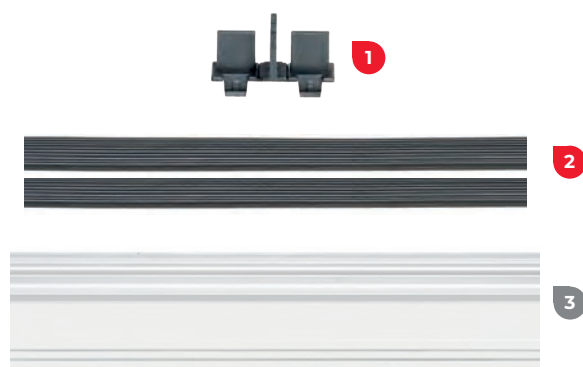
SCAN AND DOWNLOAD

Scan the QR code and download our comprehensive documentation.





PB-0-S PEDESTAL



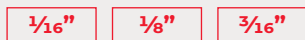
PB PEDESTAL

ARTICLE	H + (MM)	DESCRIPTION	NOTE	N°	PCS/BOX
1 U-BRS-TABS-2MM	-	1/16" U-BRS spacer tab	-	23 2490	240
U-BRS-TABS-3MM	-	1/8" U-BRS spacer tab	-	23 2066	240
U-BRS-TABS-4.5MM	-	3/16" U-BRS spacer tab	-	23 2507	240
2 E-BRS-EPDM	1/8"	1/8" E-BRS shim	2 per joist	22 2146	100
3 E-BRS-41	1 5/8"	Aluminium joist 2 3/8" x 1 5/8" (natural)	92 1/2" x 2 3/8" x 1 5/8"	21 3287	132
E-BRS-41-B	1 5/8"	Aluminium joist 2 3/8" x 1 5/8" (black anodised)	92 1/2" x 2 3/8" x 1 5/8"	21 3288	132
E-BRS-27	1"	Aluminium joist 2 3/8" x 1" (natural)	92 1/2" x 2 3/8" x 1"	31 3286	216
E-BRS-27-B	1"	Aluminium joist 2 3/8" x 1" (black anodised)	92 1/2" x 2 3/8" x 1"	21 3285	216
4 PB-KIT-2	-	U-BRS fixing attachment on PB pedestal	For PB pedestals	23 2664	120
5 U-DCW-SR-S	-	Mounting interface - Small	For PB-0-S pedestals only!	13 2697	6000
6 U-FIXING-PLATE-5	1/8"	Universal 5-point fixing	For PB-0-S pedestals only	13 2381	120

Spacer tabs

The spacer tabs (**U-BRS-TABS**), with a height of $1\frac{1}{16}$ ", are placed in the groove of the joist and guarantee uniform spacing between the pavers.

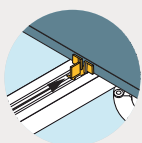
Available in 3 thicknesses:



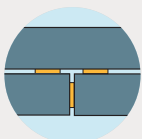
ADVANTAGES AND USES



The spacer tabs are invisible.



They slide on the joists, without the need for tools.



A single model of spacer tab allows any layout configuration, thanks to the 4 easy to detach tabs.

SCAN AND DOWNLOAD

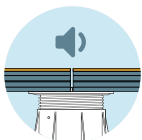
Scan the QR code and download our comprehensive documentation.



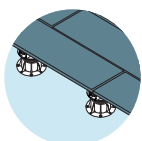
Shims

The shims (**E-BRS-EPDM**) are in EPDM with a thickness of $\frac{3}{8}$ " and are placed on the aluminium joist. **They are an integral part of the E-BRS.**

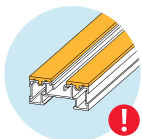
ADVANTAGES AND USES



Reduces impact noises.



Stabilises the paving (anti-slip).



An integral part of the joist.

SCAN AND DOWNLOAD

Scan the QR code and download our comprehensive documentation.





1



1



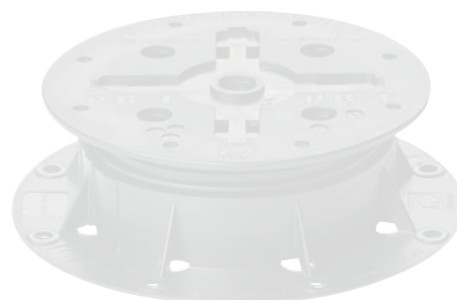
3



4



2



5

PB-0-S PEDESTAL



5

PB PEDESTAL

TOOLS



6



7

	ARTICLE	H + (MM)	DESCRIPTION	NOTE	N°	PCS/BOX
1	E-BRS-41	1 5/8"	Aluminium joist 2 3/8" x 1 5/8" (natural)	92 1/2" x 2 3/8" x 1 5/8"	21 3287	132
	E-BRS-41-B	1 5/8"	Aluminium joist 2 3/8" x 1 5/8" (black anodised)	92 1/2" x 2 3/8" x 1 5/8"	21 3288	132
	E-BRS-27	1"	Aluminium joist 2 3/8" x 1" (natural)	92 1/2" x 2 3/8" x 1"	31 3286	216
	E-BRS-27-B	1"	Aluminium joist 2 3/8" x 1" (black anodised)	92 1/2" x 2 3/8" x 1"	21 3285	216
2	PB-KIT-2	-	U-BRS fixing attachment on PB pedestal	For PB pedestals	23 2664	120
3	U-DCW-5R-S	-	Mounting interface - Small	For PB-0-S pedestals only	13 2697	6000
4	U-FIXING-PLATE-5	1/8"	Universal 5-point fixing	For PB-0-S pedestals only	13 2381	120
5	U-PH5	-	Slope corrector	Compatible with all pedestals Includes the locking key	12 2126	24
6	U-KIT-SL-80	-	Buzon spirit level	Used to measure slopes	99 0605	1
7	U-PH5-KEY-FOOT	-	Slope corrector locking key	Delivered with the complete boxes of slope correctors (U-PH5)	12 2115	-

Slope corrector

The slope corrector (**U-PH5**) is an adjustable plate to be placed under the pedestal. It consists of two discs that are simply turned one on top of the other to correct the slope.

Additional height:

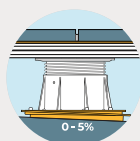
⬆ 14 MM ⬆

The additional height is independent of the adjustment value.

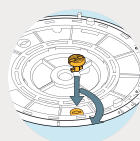
SCAN AND DOWNLOAD

Scan the QR code and download our comprehensive documentation.

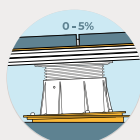
ADVANTAGES AND USES



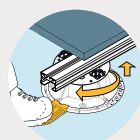
Slope correction of up to 5% in 0.5% intervals.



The Buzon slope corrector remains stable over time, thanks to its locking key.



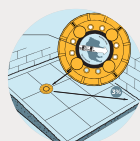
It allows a perfectly horizontal terrace to be built on sloping ground or a sloping terrace to be built on flat ground.



The locking key (**U-PH5-KEY-FOOT**) is used to keep the slope corrector in the correct position when adjusting the pedestal.

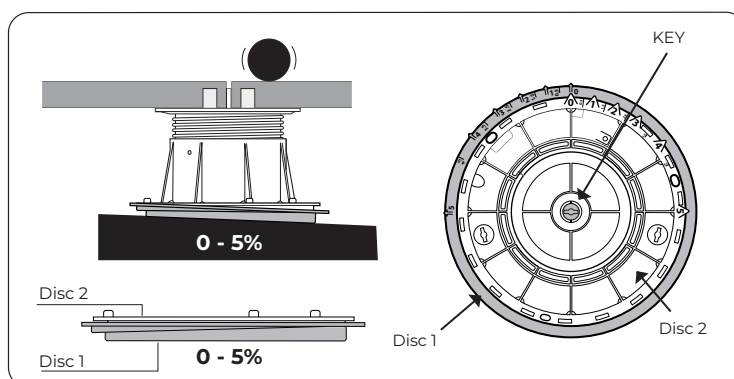
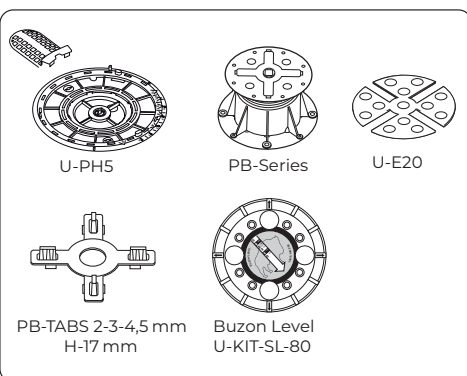


The slope corrector is exclusive to Buzon and protected by an international patent.



The Buzon spirit level (**U-KIT-SL-80**) is the essential tool when working with slopes. It measures the value and direction of the slope of the support in one single step.

PAVED TERRACE
ON JOISTS





1



1



3



4

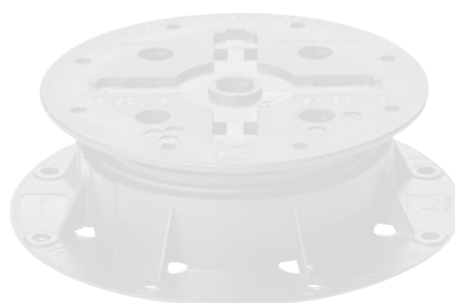


2



5

PB-0-S PEDESTAL



5

PB PEDESTAL

	ARTICLE	H + (MM)	DESCRIPTION	NOTE	N°	PCS/BOX
1	E-BRS-41	1 5/8"	Aluminium joist 2 3/8" x 1 5/8" (natural)	92 1/2" x 2 3/8" x 1 5/8"	21 3287	132
	E-BRS-41-B	1 5/8"	Aluminium joist 2 3/8" x 1 5/8" (black anodised)	92 1/2" x 2 3/8" x 1 5/8"	21 3288	132
	E-BRS-27	1"	Aluminium joist 2 3/8" x 1" (natural)	92 1/2" x 2 3/8" x 1"	31 3286	216
	E-BRS-27-B	1"	Aluminium joist 2 3/8" x 1" (black anodised)	92 1/2" x 2 3/8" x 1"	21 3285	216
2	PB-KIT-2	-	U-BRS fixing attachment on PB pedestal	For PB pedestals	23 2664	120
3	U-DCW-5R-S	-	Mounting interface - Small	For PB-0-S pedestals only!	13 2697	6000
4	U-FIXING-PLATE-5	1/8"	Universal 5-point fixing	For PB-0-S pedestals only	13 2381	120
5	U-PAD-3MM	-	7 7/8" x 7 7/8" x 1/8" protection layer	-	12 1837	24
	U-PAD-6MM	-	7 7/8" x 7 7/8" x 1/4" protection layer	-	12 2027	24
	U-PAD-10MM	-	7 7/8" x 7 7/8" x 3/8" protection layer	-	12 1835	24

Protection layers for pedestals

The protection layer (**U-PAD**) is made of rot-proof recycled rubber and is placed under the pedestal.

Available in 3 thicknesses:

1/8"

1/4"

3/8"

ADVANTAGES AND USES



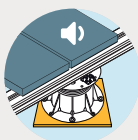
Allows the pedestal to be laid on uneven ground, such as coarse concrete.



Used to raise the pedestal.



Protects the waterproofing membrane from any risk of puncturing (installation on a flat roof).

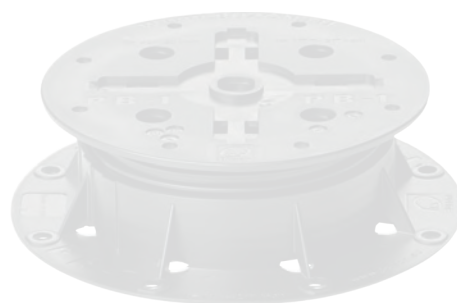
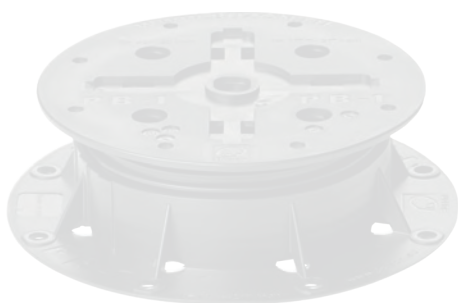
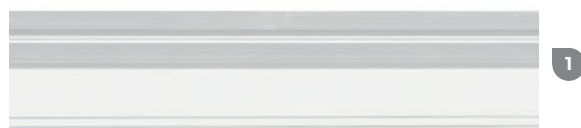


Improves acoustic comfort in living areas under the terrace (laid on a flat roof).

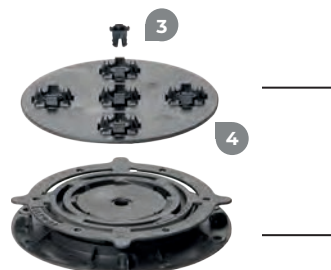


SCAN AND DOWNLOAD

Scan the QR code and download our comprehensive documentation.

**PB-0-S PEDESTAL****PB PEDESTAL****PB-0-S PEDESTAL****PB PEDESTAL****PB-0-S PEDESTAL**

Requires the use of the **U-FIXING-PLATE-5**
and of the **U-DCW-5R-S**.



	ARTICLE	H + (MM)	DESCRIPTION	NOTE	N°	PCS/BOX
1	E-BRS-41	1 5/8"	Aluminium joist 2 3/8" x 1 5/8" (natural)	92 1/2" x 2 3/8" x 1 5/8"	21 3287	132
	E-BRS-41-B	1 5/8"	Aluminium joist 2 3/8" x 1 5/8" (black anodised)	92 1/2" x 2 3/8" x 1 5/8"	21 3288	132
	E-BRS-27	1"	Aluminium joist 2 3/8" x 1" (natural)	92 1/2" x 2 3/8" x 1"	31 3286	216
	E-BRS-27-B	1"	Aluminium joist 2 3/8" x 1" (black anodised)	92 1/2" x 2 3/8" x 1"	21 3285	216
2	PB-KIT-2	-	U-BRS fixing attachment on PB pedestal	For PB pedestals	23 2664	120
3	U-DCW-5R-S	-	Mounting interface - Small	For PB-0-S pedestals only!	13 2697	6000
4	U-FIXING-PLATE-5	1/8"	Universal 5-point fixing	For PB-0-S pedestals only	13 2381	120
5	U-SHIM-5MM	3/16"	3/16" riser	-	12 2335	24
6	PB-EXT-30	1 3/16"	1 3/16" riser	Incompatible with the PB-00 pedestal	12 3102	48

3/16" riser

The riser (**U-SHIM-5MM**) is a 3/16" (5 mm) extension that is placed under the pedestal, allowing it to be raised in increments of 3/16".

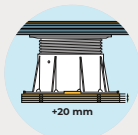
ADVANTAGES AND USES



Limits site discontinuances.



Clips simply under the pedestal, without the need for tools.



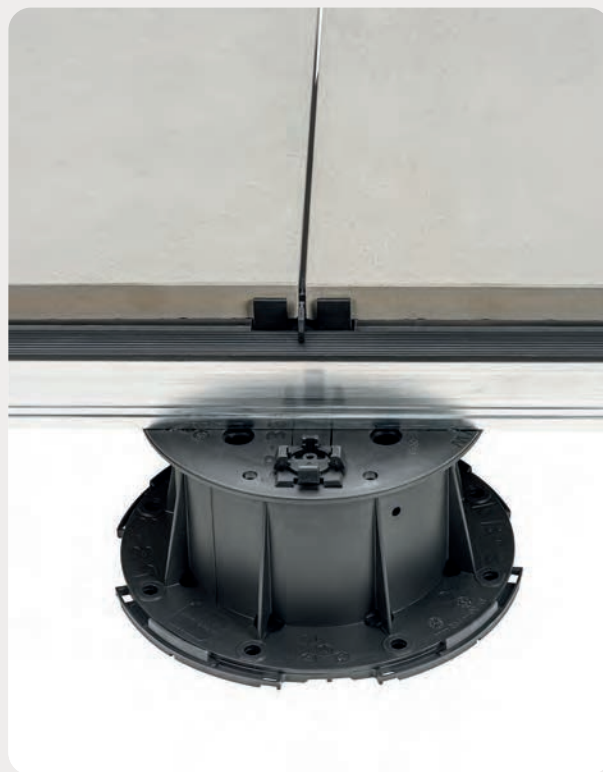
Can be stacked in multiples of 4.



Compatible with all the **PB pedestals** and **PB-0-S pedestals** and with the slope corrector.

SCAN AND DOWNLOAD

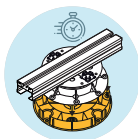
Scan the QR code and download our comprehensive documentation.



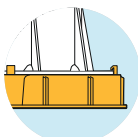
1 3/16" riser

The riser (**PB-EXT-30**) is a 1 3/16" (30 mm) extension that is placed under the pedestal, allowing it to be raised in increments of 1 3/16".

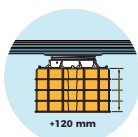
ADVANTAGES AND USES



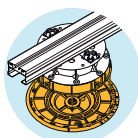
Limits site discontinuances.



Clips simply under the pedestal, without the need for tools.



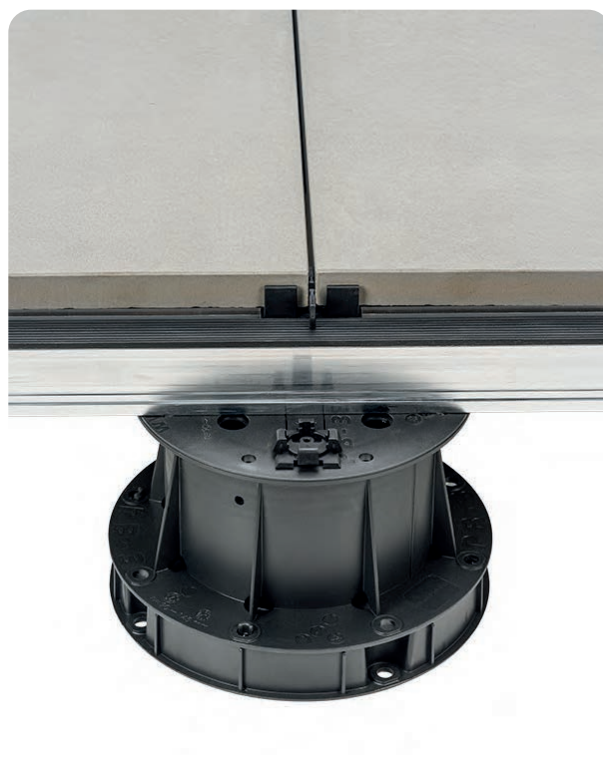
Can be stacked in multiples of 4.



Compatible with all the **PB** (with the exception of the **PB-00**) and **PB-0-S** pedestals and with the slope connector.

SCAN AND DOWNLOAD

Scan the QR code and download our comprehensive documentation.



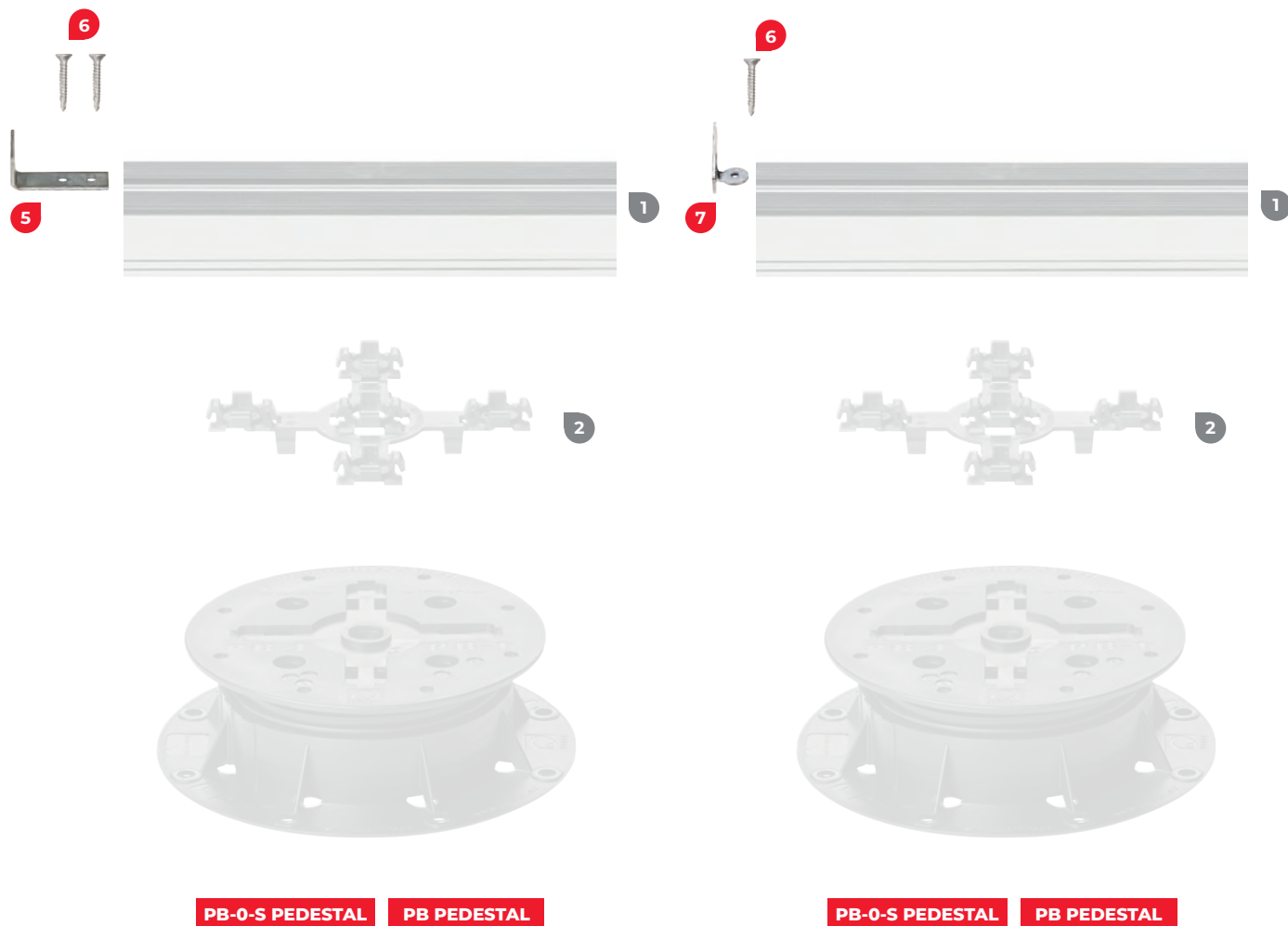
An aerial photograph showing the construction of a terrace. A metal rail system is being installed on a concrete base. The terrace is partially covered with wooden decking planks. A red level and a red pencil are visible on the decking. A black bag and a small container are near a window opening in the background. A yellow box with a black quote mark is in the top left corner.

“

**YOUR NEW
TERRACE WITH THE
EASY RAIL SYSTEM
FROM BUZON**



PAVED TERRACE
ON JOISTS

**'PB-0-S PEDESTAL**

Requires the use of the **U-FIXING-PLATE-5**
and of the **U-DCW-5R-S**.

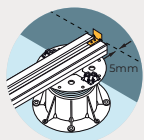


	ARTICLE	H + (MM)	DESCRIPTION	NOTE	N°	PCS/BOX
1	E-BRS-41	1 5/8"	Aluminium joist 2 3/8" x 1 5/8" (natural)	92 1/2" x 2 3/8" x 1 5/8"	21 3287	132
	E-BRS-41-B	1 5/8"	Aluminium joist 2 3/8" x 1 5/8" (black anodised)	92 1/2" x 2 3/8" x 1 5/8"	21 3288	132
	E-BRS-27	1"	Aluminium joist 2 3/8" x 1" (natural)	92 1/2" x 2 3/8" x 1"	31 3286	216
	E-BRS-27-B	1"	Aluminium joist 2 3/8" x 1" (black anodised)	92 1/2" x 2 3/8" x 1"	21 3285	216
2	PB-KIT-2	-	U-BRS fixing attachment on PB pedestal	For PB pedestals	23 2664	120
3	U-DCW-5R-S	-	Mounting interface - Small	For PB-0-S pedestals only!	13 2697	6000
4	U-FIXING-PLATE-5	1/8"	Universal 5-point fixing	For PB-0-S pedestals only	13 2381	120
5	U-BRS-STOP	-	Joist holder	-	24 2788	1000
6	U-BRS-VIS	-	1/8" x 1" screw	-	23 2431	100
7	E-BRS-STOP-ROUND	-	Pivotable joist holder	-	-	TBC

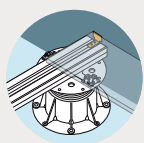
Joist holder

The joist holder (**U-BRS-STOP**) slides into the joist and is used to hold the peripheral pavers in position.

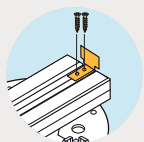
ADVANTAGES AND USES



Ensures a constant space between the wall and the pavers to favour good peripheral water run-off.



Prevents the edges of the pavers from damaging walls and waterproofing.



Fixed using screws.

SCAN AND DOWNLOAD

Scan the QR code and download our comprehensive documentation.



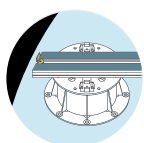
Pivotable joist holder

The pivotable joist holder (**E-BRS-STOP-ROUND**) slides into the joist and is used to hold the peripheral pavers in position.

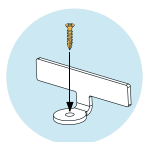
ADVANTAGES AND USES



Pivots easily and adapts perfectly to the cut angle of the joist.



Ensures a constant space between the wall and the pavers to favour good peripheral water run-off.

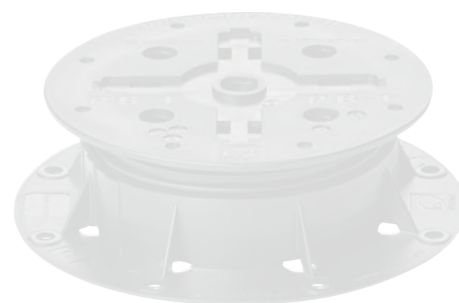
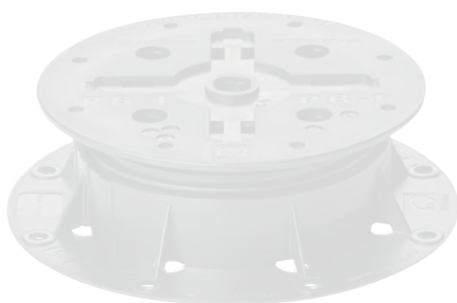
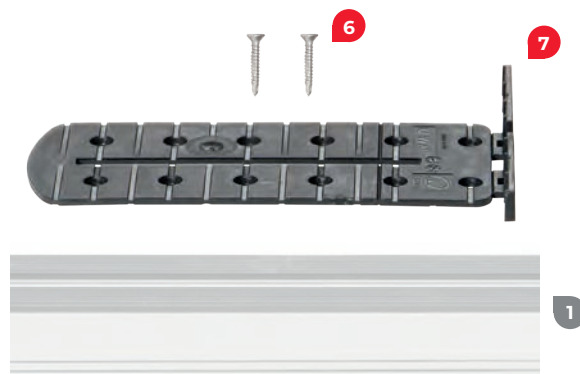


Fixed using a screw.

SCAN AND DOWNLOAD

Scan the QR code and download our comprehensive documentation.



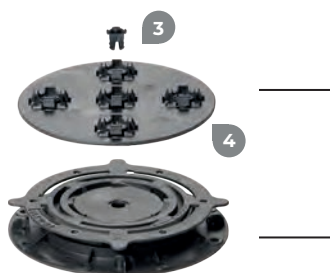


PB PEDESTAL

PB PEDESTAL

PB-0-S PEDESTAL

Requires the use of the **U-FIXING-PLATE-5** and of the **U-DCW-5R-S**.



ARTICLE	H + (MM)	DESCRIPTION	NOTE	N°	PCS/BOX
1 E-BRS-41	1 5/8"	Aluminium joist 2 3/8" x 1 5/8" (natural)	92 1/2" x 2 3/8" x 1 5/8"	21 3287	132
E-BRS-41-B	1 5/8"	Aluminium joist 2 3/8" x 1 5/8" (black anodised)	92 1/2" x 2 3/8" x 1 5/8"	21 3288	132
E-BRS-27	1"	Aluminium joist 2 3/8" x 1" (natural)	92 1/2" x 2 3/8" x 1"	31 3286	216
E-BRS-27-B	1"	Aluminium joist 2 3/8" x 1" (black anodised)	92 1/2" x 2 3/8" x 1"	21 3285	216
2 PB-KIT-2	-	U-BRS fixing attachment on PB pedestal	For PB pedestals	23 2664	120
3 U-DCW-5R-S	-	Mounting interface - Small	For PB-0-S pedestals only!	13 2697	6000
4 U-FIXING-PLATE-5	1/8"	Universal 5-point fixing	For PB-0-S pedestals only	13 2381	120
5 E-BRS-WALL	-	Wall spacer	-	24 3315	TBC
6 U-BRS-VIS	-	1/8" x 1" screw	-	23 2431	100
7 U-WALL	-	Wall spacer	Compatible with all pedestals	14 2309	24

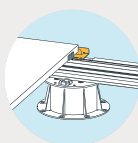
Wall spacer

The wall spacer (**E-BRS-WALL**) stabilises the last row of pavers (along the wall) when the joist is positioned parallel to the wall.

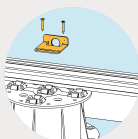
ADVANTAGES AND USES



Creates a $\frac{3}{16}$ " gap between the paver and the wall to guarantee natural water run-off.



Stabilises the last row of pavers (along the wall)

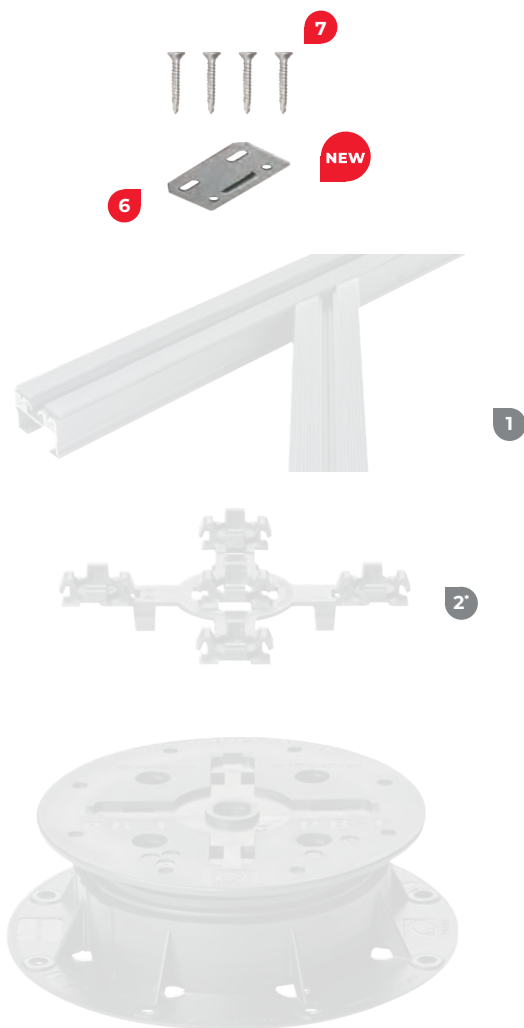


Compatible with the **U-BRS-VIS** screws.

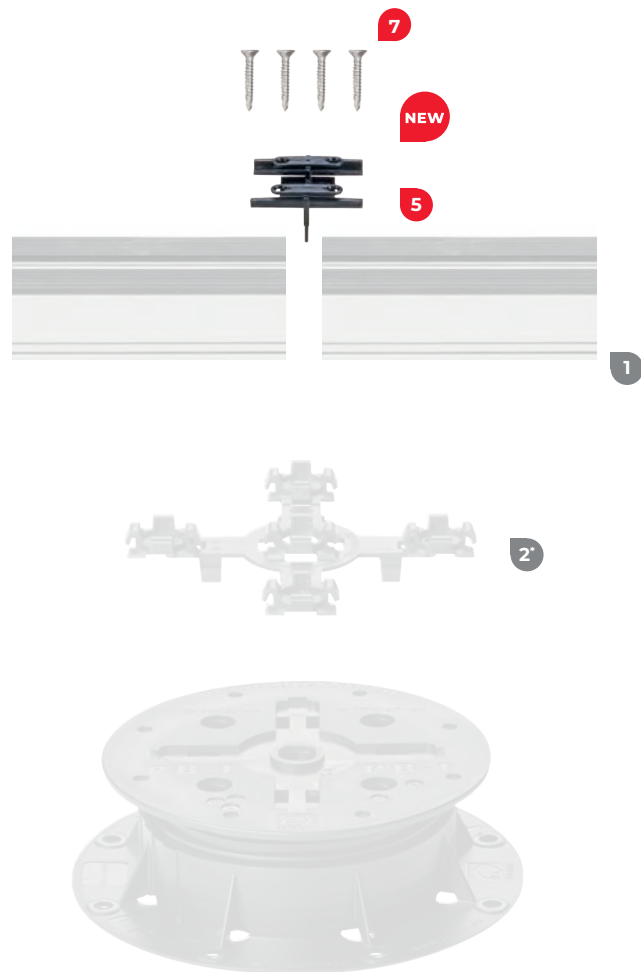
SCAN AND DOWNLOAD

Scan the QR code and download our comprehensive documentation.





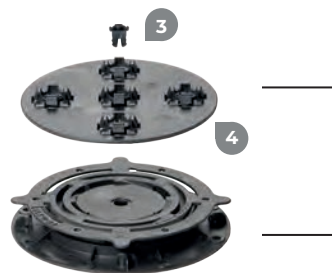
PB PEDESTAL



PB PEDESTAL

PB-0-S PEDESTAL

Requires the use of the **U-FIXING-PLATE-5** and of the **U-DCW-5R-S**.

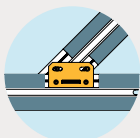


	ARTICLE	H + (MM)	DESCRIPTION	NOTE	N°	PCS/BOX
1	E-BRS-41	1 5/8"	Aluminium joist 2 3/8" x 1 5/8" (natural)	92 1/2" x 2 3/8" x 1 5/8"	21 3287	132
	E-BRS-41-B	1 5/8"	Aluminium joist 2 3/8" x 1 5/8" (black anodised)	92 1/2" x 2 3/8" x 1 5/8"	21 3288	132
	E-BRS-27	1"	Aluminium joist 2 3/8" x 1" (natural)	92 1/2" x 2 3/8" x 1"	21 3286	216
	E-BRS-27-B	1"	Aluminium joist 2 3/8" x 1" (black anodised)	92 1/2" x 2 3/8" x 1"	21 3285	216
2	PB-KIT-2	-	Connector to fix E-BRS on PB	For PB pedestals	23 2664	120
3	U-DCW-5R-S	-	Mounting interface - Small	For PB-0-S pedestals only	13 2697	6000
4	U-FIXING-PLATE-5	1/8"	Universal 5-point fixing	For PB-0-S pedestals only	13 2381	120
5	E-BRS-CONNECTION	-	Joist connector	-	24 3373	100
6	E-BRS-TOP-LINK	-	Chaining link for E-BRS	-	24 3310	1000
7	U-BRS-VIS	-	1/8" x 1" screw	-	23 2431	100

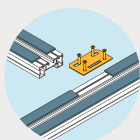
Tie

The **E-BRS-TOP-LINK** is a tie that allows pedestals to be linked together easily.

ADVANTAGES AND USES



Installation on the angles between joists between 90° and 45°.



Compatible with the **U-BRS-VIS**

SCAN AND DOWNLOAD

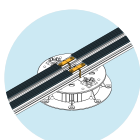
Scan the QR code and download our comprehensive documentation.



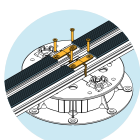
Connector for joists

The joist connector (**E-BRS-CONNECTION**) makes it easy to join joists together.

ADVANTAGES AND USES



Allows two **E-BRS** joists to be joined and facilitates installation. (The joint must be made on a pedestal).

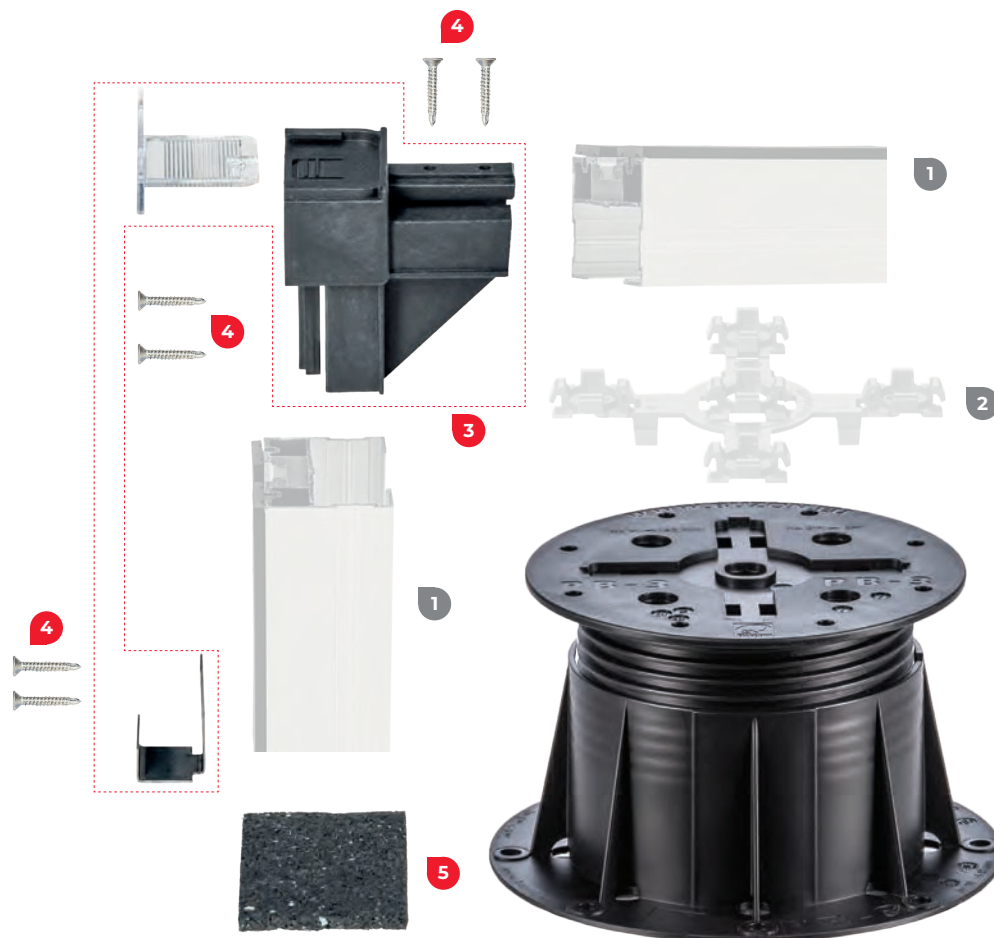


Compatible with **E-BRS-27** and **E-BRS-41**.
Attaches with **U-BRS-VIS**.

SCAN AND DOWNLOAD

Scan the QR code and download our comprehensive documentation.



**PB PEDESTAL**

ARTICLE		H + (MM)	DESCRIPTION	NOTE	N°	PCS/BOX
1	E-BRS-41	1 5⁄8"	Aluminium joist 2 3⁄8" x 1 5⁄8" (natural)	92 1⁄2" x 2 3⁄8" x 1 5⁄8"	21 3287	132
	E-BRS-41-B	1 5⁄8"	Aluminium joist 2 3⁄8" x 1 5⁄8" (black anodised)	92 1⁄2" x 2 3⁄8" x 1 5⁄8"	21 3288	132
	E-BRS-27	1"	Aluminium joist 2 3⁄8" x 1" (natural)	92 1⁄2" x 2 3⁄8" x 1"	31 3286	216
	E-BRS-27-B	1"	Aluminium joist 2 3⁄8" x 1" (black anodised)	92 1⁄2" x 2 3⁄8" x 1"	21 3285	216
2	PB-KIT-2	-	U-BRS fixing attachment on PB pedestal	For PB pedestals	23 2664	120
3	KIT-U-BRS-END-BRACKET-24	-	1" joist connector	The kit includes: U-BRS- END-BRACKET-24, U-BRS- END-B, U-END-LOCK	24 3117	24
	KIT-U-BRS-END-BRACKET-38	-	1 5⁄8" joist connector	The kit includes: U-BRS- END-BRACKET-38, U-BRS- END-B, U-END-LOCK	24 3118	24
4	U-BRS-VIS	-	1/8" x 1" screw	-	23 2431	100
5	U-PAD-6MM-69	-	3 1⁄2" x 2 3⁄8" x 1⁄4" protection layer	-	12 1902	24

Bracket connector for joists

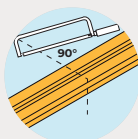
The joist connector (**U-BRS-END-BRACKET**) is a junction component for **U-BRS** joists allowing right angles to be created easily for terraces or decking.

Available in 2 thicknesses:

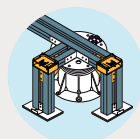
1"

1 5/8"

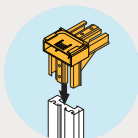
ADVANTAGES AND USES



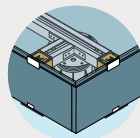
A simple straight cut of the joist is all it takes.



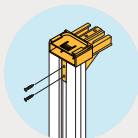
Allows terrace angles to be created easily.



Slides into the **U-BRS** joist.



Time saving for finishes.

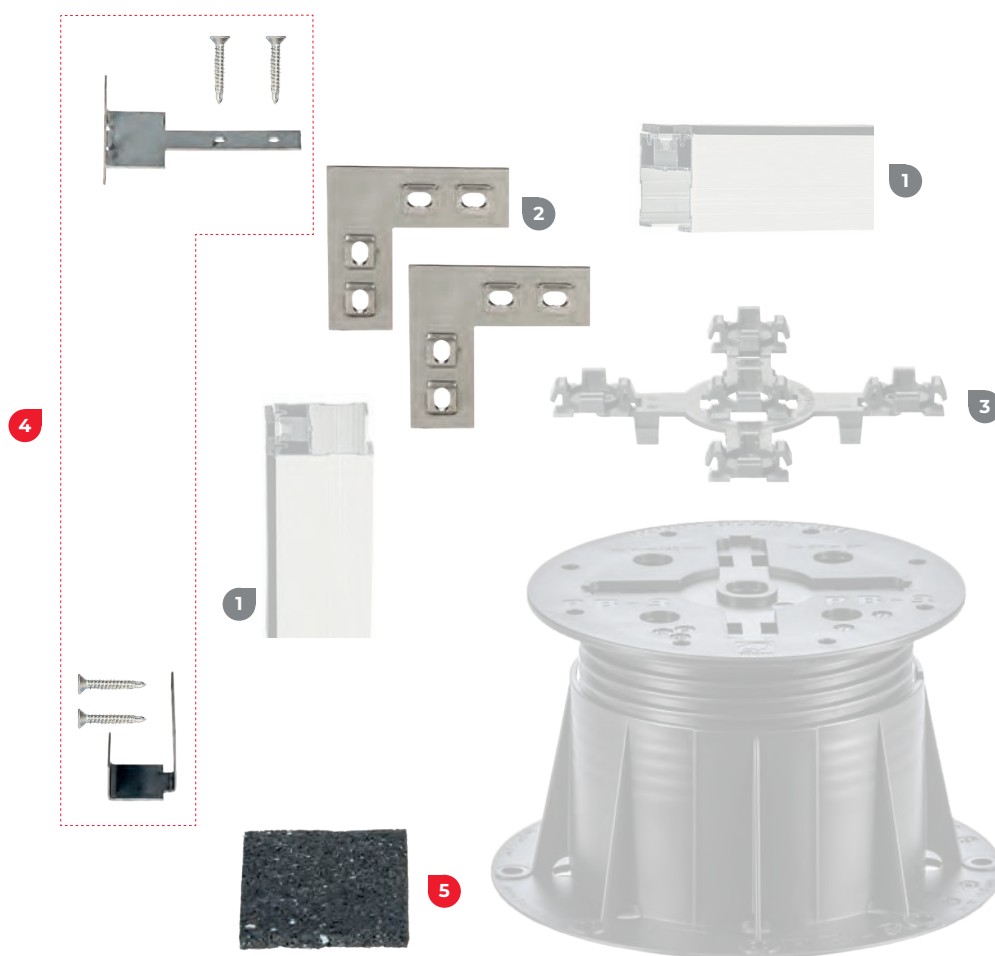


Fixed using the **U-BRS-VIS** screw.



Compatible with the **U-BRS joists and from the PB-3 pedestal.**





PB PEDESTAL

	ARTICLE	H + (MM)	DESCRIPTION	NOTE	N°	PCS/BOX
1	E-BRS-41	1 5/8"	Aluminium joist 2 3/8" x 1 5/8" (natural)	92 1/2" x 2 3/8" x 1 5/8"	21 3287	132
	E-BRS-41-B	1 5/8"	Aluminium joist 2 3/8" x 1 5/8" (black anodised)	92 1/2" x 2 3/8" x 1 5/8"	21 3288	132
	E-BRS-27	1"	Aluminium joist 2 3/8" x 1" (natural)	92 1/2" x 2 3/8" x 1"	31 3286	216
	E-BRS-27-B	1"	Aluminium joist 2 3/8" x 1" (black anodised)	92 1/2" x 2 3/8" x 1"	21 3285	216
2	E-BRS-BRACKET	-	fixing bracket	-	24 3309	TBC
3	PB-KIT-2	-	U-BRS fixing attachment on PB pedestal	For PB pedestals	23 2664	120
4	U-BRS-END KIT	-	U-BRS INOX terrace finishing kit	The kit includes: U-BRS- END-T, U-BRS-END-B, U-BRS-END-CONNECTOR (x2), U-BRS-VIS (x12)	24 2856	1
5	U-PAD-6MM-69	-	3 1/2" x 2 3/8" x 1/4" protection layer	-	12 1902	24

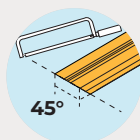
Finishing kit

The stainless steel terrace finishing kit (KIT-U-BRS-END with the **E-BRS-BRACKET**) makes it possible to create edges that perfectly match the terrace. Hooks fasten onto the head and base of the pedestal and hold the pavers vertically.

SCAN AND DOWNLOAD

Scan the QR code and download our comprehensive documentation.

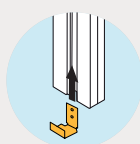
ADVANTAGES AND USES



Requires the joist to be cut at a 45° angle.



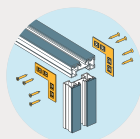
Compatible with 20 mm-thick pavers only.



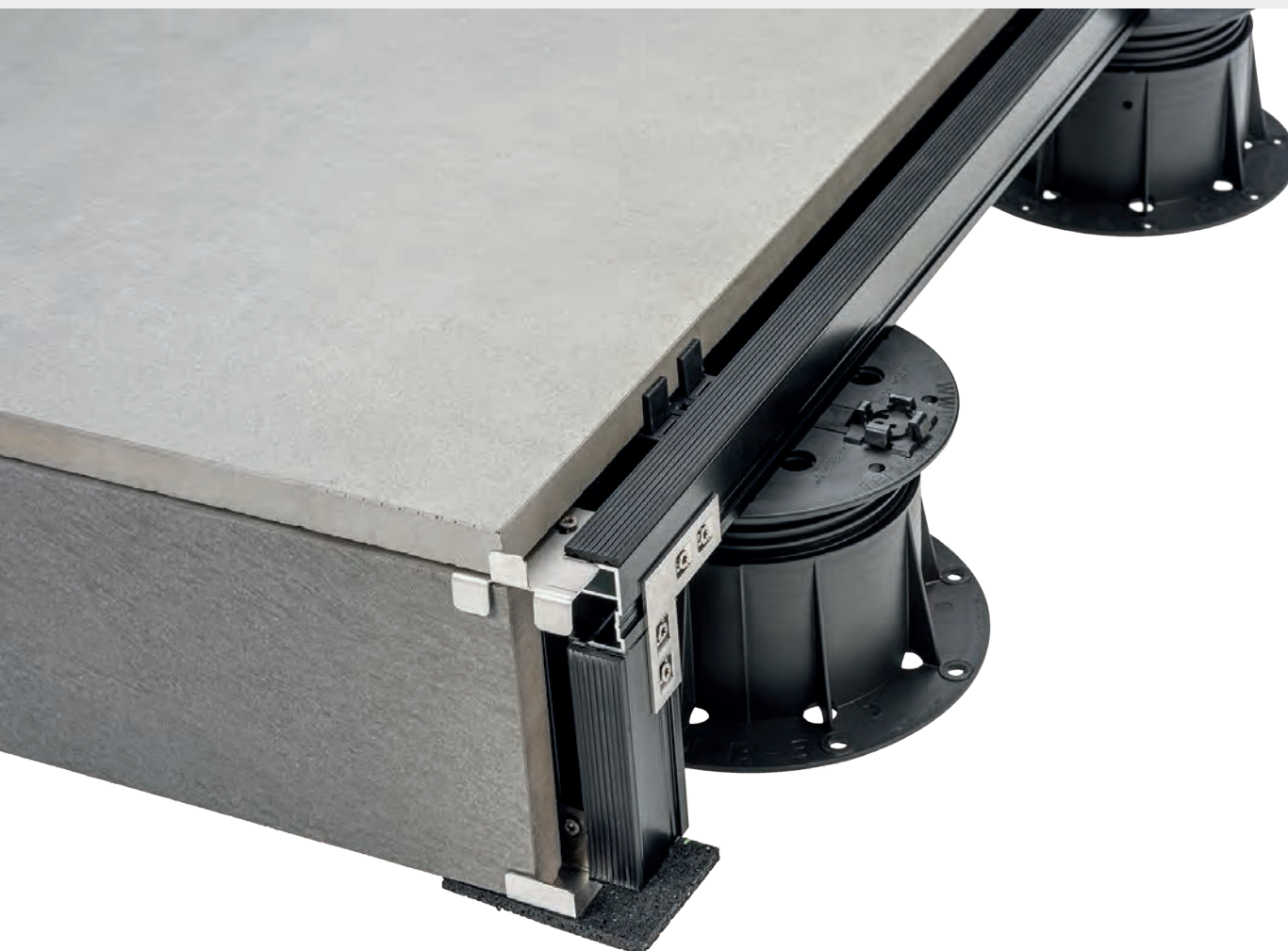
Slides into the **U-BRS** joist.



Compatible with the **U-BRS joists** and from the **PB-3** pedestal.



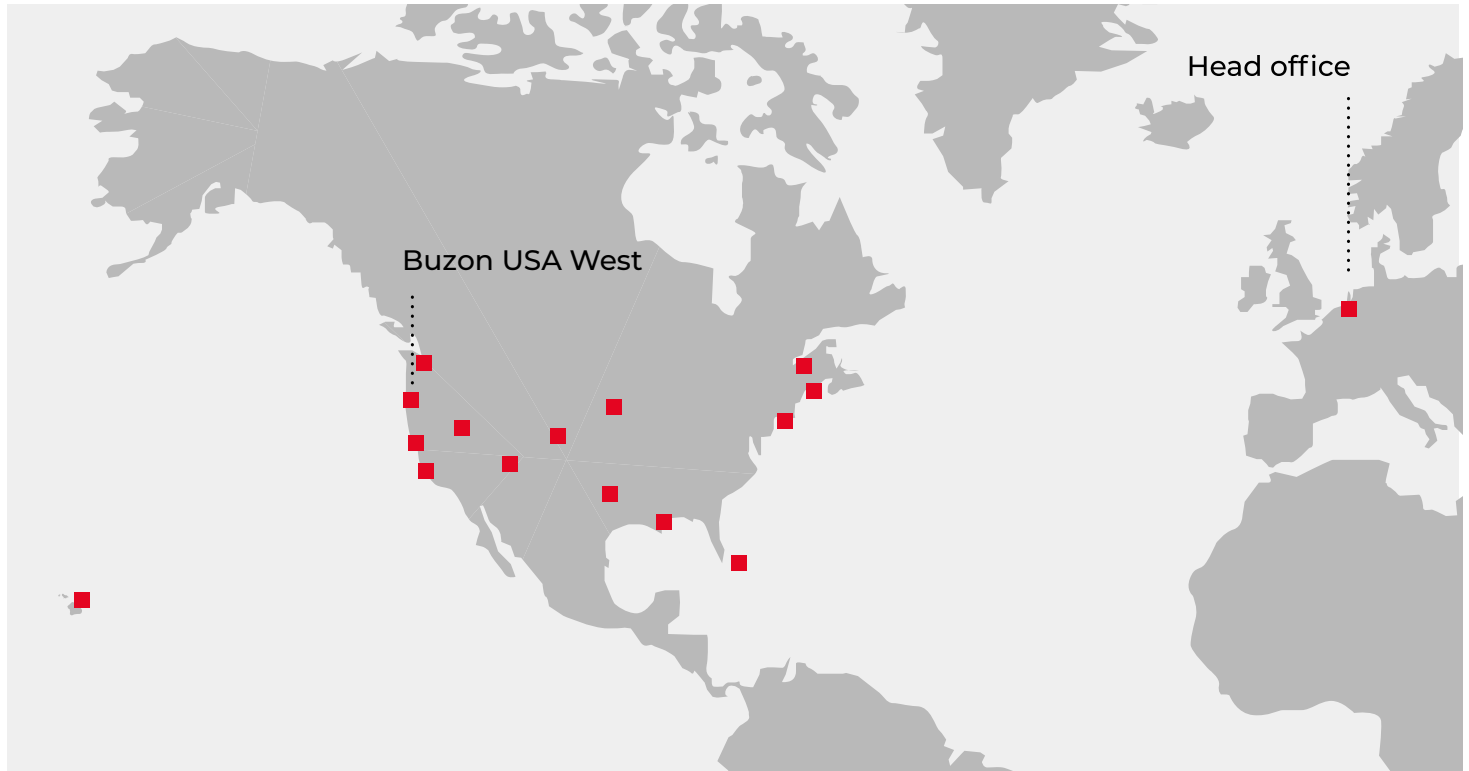
Fixed using the **U-BRS-VIS** screw.





Notes

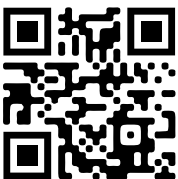
Buzon USA West Projects



References

- Sun's Practice Facility - Phoenix, AZ
- Sony Studio HQ - Los Angeles, CA
- Apple Campus - Palo Alto, CA
- Samsung HQ - Palo Alto, CA
- Lucille Packard Children's Hospital - Stanford, CA
- Haas School of Business - UC Berkeley, CA
- IMAX Theater - Nassau, Bahamas
- Four Seasons Hotel - Honolulu, HI
- Canal Street Rooftop Pool - New Orleans, LA

- Smith Center Harvard University - Cambridge, MA
- Microsoft Campus - Redmond, WA
- The Dean - Palo Alto, CA
- Nike Campus HQ - Beaverton, OR
- Hoakalei CC - Ewa Beach, HI
- Hilton Grand Islander - Honolulu, HI
- Four Seasons Resort at Ko Olina - Kapolei, HI
- One World Trade Center - New York City, NY
- Wynn Resort & Casino Hotel - Las Vegas, NV



Buzon®

Buzon USA West

sales@buzonusawest.com

buzonpedestals.com

(503) 954 - 3336